

Warwickshire Health and Wellbeing Board Sub-Committee

22nd March 2019

CAMHS Local Transformation Plan: year 3 refresh

Recommendation(s)

1. The Warwickshire Health and Wellbeing Board endorse the Coventry and Warwickshire CAMHS (Child and Adolescent Mental Health Services) Local Transformation Plan refresh for year three.

1.0. Key Issues

- 1.1. *'Future in Mind'* (DH, 2015) sets out a series of recommendations to improve outcomes for children and young people with mental health problems. Five year CAMHS transformation funding was subsequently made available to Clinical Commissioning Groups (CCGs) operating within Local Transformation Plan (LTP) areas. The Coventry and Warwickshire LTP area incorporates the three local CCGs, with allocated funding of £1.7m per year across the area.
- 1.2. There has been a requirement from NHS England (NHSE) for CCGs to develop a Children and Adolescent Mental Health Service (CAMHS) Transformation Plan, working with their local partners to set out a strategic vision for delivering improvements in children and young people's mental health, and wellbeing over the five-year period from 2015 to 2020.
- 1.3. The Coventry and Warwickshire CAMHS LTP was submitted to NHSE in 2015, and CCGs are required to refresh the plan annually, to demonstrate progress and outline priorities for the forthcoming year. This is the third year of the CAMHS LTP refresh, highlighting progress against the priorities for 2017/18, and further progress planned for 2018/19.
- 1.4. The refreshed plans are signed off by NHSE and we are awaiting final sign off from NHSE. There is a requirement for the plans to be developed collaboratively with key partners. In line with this requirement, the refresh process is managed through the multi-agency CAMHS Transformation Board. The board is led by CRCCG and includes representation from the Coventry and Warwickshire Local Authorities, provider organisations such as Coventry and Warwickshire Partnership NHS Trust (CWPT), Coventry and Warwickshire Mind (CW Mind) and schools.
- 1.5. Governance and oversight of the Local Transformation Plan is provided by the Coventry and Warwickshire CAMHS Transformation Board. This is chaired by the Director of Commissioning for Coventry and Rugby CCG and has representation from CCGs, Coventry City Council, Warwickshire County

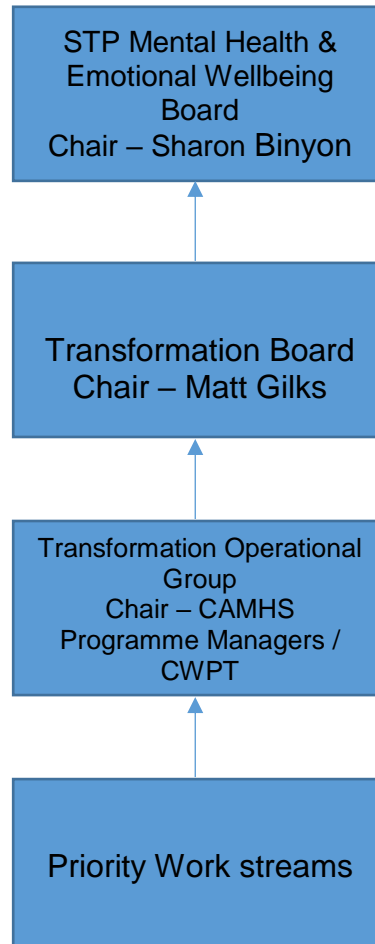
Council, Coventry and Warwickshire Partnership Trust and Coventry and Warwickshire Mind as providers, and Schools as key stakeholders.

2.0. Coventry and Warwickshire CAMHS Transformation Plan: Year 3 refresh

- 2.1. The Coventry and Warwickshire LTP year three refresh is attached as appendix 1. It details progress made in year three of the five year plan, and sets out priorities for year four.
- 2.2. Year two of the LTP coincided with the start of the new Warwickshire Children and Young People's Emotional Well-being and Mental Health service for 0-25 Year Olds, known as Rise. The new service has a two year implementation period running until August 2019. The service is now in year two of the two year implementation plan and the year three LTP details the progress made. The priority themes in year four of the LTP continue to be aligned against the Implementation Plan for the new service. These themes are listed below. Each is underpinned by a detailed delivery plan which is monitored by the commissioners:
 - 2.2.1. Improving the timeliness and breadth of access to emotional wellbeing and mental health support available to children and young people.
 - 2.2.2. Establishing locality working arrangements which provide local access to a range of support and resources (including via Coventry Family Hubs and Warwickshire Community Partnerships)
 - 2.2.3. Further develop collaborative pathways for young people who may require Tier 4 beds and developing further local CAMHS crisis response
 - 2.2.4. Enhance evidence of service effectiveness by implementing further Routine Outcomes Measures (ROM) and monitoring
 - 2.2.5. Ensure the CAMHS digital offer improves access and support to children, families, carers and professionals
 - 2.2.6. Evaluating the impact of the Dimension tool on access and waiting times by monitoring the roll out of the tool in new Warwickshire service model
 - 2.2.7. Evaluating the impact of the CAMHS transformation plan for service users and other key stakeholders
 - 2.2.8. Further strengthening support for a range of vulnerable children and young people including those with autism and/or learning disabilities
 - 2.2.9. Developing a multi-agency workforce plan
- 2.3. Accompanying the priorities for 2018/19 there is a clear action plan, appendix 2. The action plan lays out the strategic work required alongside deadlines and named individuals to ensure accountability. This action plan will be monitored monthly by the Transformation Operational Group and fed into the Transformation Board. The Governance section below will highlight the proposed pathway.

3.0. Governance

The proposed governance structure below, which has been agreed with STP Mental Health & Emotional Wellbeing Board, will provide accountability to ensure the delivery of the actions to meet the priorities:



4.0. Timescales associated with the decision and next steps

- 4.1. The year three refresh of the Coventry and Warwickshire CAMHS Transformation Plan was submitted to NHS England on 31st October 2018 and has been signed off by the STP Mental Health & Emotional Wellbeing Programme Board.
- 4.2. It is anticipated that NHS England will require the year four LTP refresh to be submitted at the end of October 2019, and that local Health and Wellbeing Boards will be requested to sign off the plans.

Background papers: None

Appendices

Appendix 1: Coventry and Warwickshire Children and Young People's
Child and Adolescent Mental Health Services (CAMHS) Transformation Plan
2015-2020 – End of Year 3 Refresh: 31 October 2018 (DRAFT)

Appendix 2: Coventry and Warwickshire CAMHS Local Transformation Plan Year 3
Refresh CAMHS Local Transformation Plan 2018/19 Action Plan

	Name	Contact Information
Report Authors	Louise Birta WCC Children's Commissioner Richard Limb CCC CAMHS Programme Manager	louisebirta@warwickshire.gov.uk Tel: 01926 742337
Assistant Director	John Linnane	johnlinnane@warwickshire.gov.uk Tel: 01926 413705
Strategic Director	Nigel Minns	nigelminns@warwickshire.gov.uk Tel: 01926 412665
Portfolio Holder	Cllr Jeff Morgan	cllrmorgan@warwickshire.gov.uk Tel: 02476 340976

The report was circulated to the following members prior to publication:

Local Member(s): none

Other members: Councillors Caborn, Redford, Golby, Parsons and Rolfe